



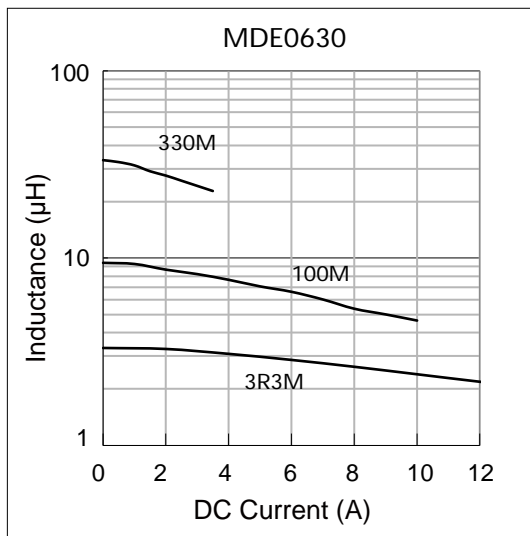
Part No	Inductance @ 100kHz/1V	Tolerance	DC Resistance Max.	Current Typ. (A)	Temperature Rise Current Typ. (A)
MDE0630-220M	22.0	±20%	170	3.00	2.50
MDE0630-330M	33.0	±20%	270	2.50	2.00
MDE0630-470M	47.0	±20%	385	2.00	1.50

Saturation Current will cause L to drop approximately 30%

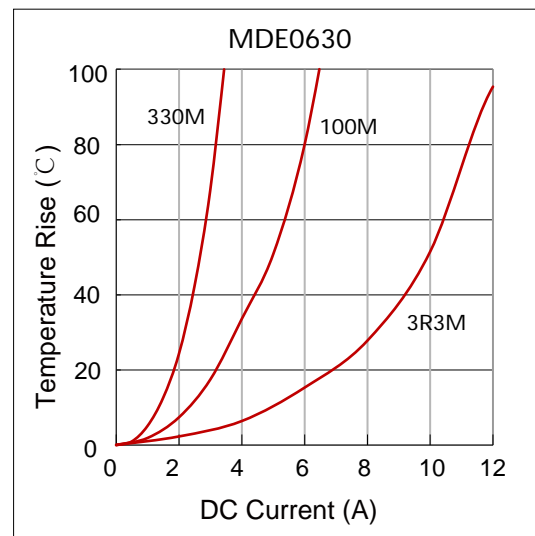
Temperature Rise Current: The actual value of DC current when the temperature rise is  $\Delta T=40^{\circ}\text{C}$

## Typical Electrical Characteristics:

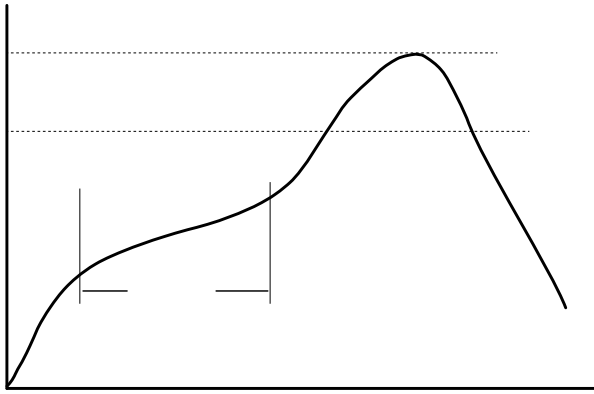
Inductance vs DC Current Characteristics:



Temperature Rise vs DC Current Characteristics:



## Soldering Reflow:



Preheat condition: 150 ~200 °C / 60~120 sec.

Allowed time above 217 °C : 60~90 sec.

Max temperature: 260 °C .

## Packaging Information:

Tape Dimension:

Reel Dimension: [mm]

Packaging Quantity: