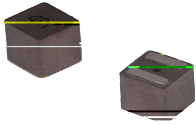


# MDTA Series



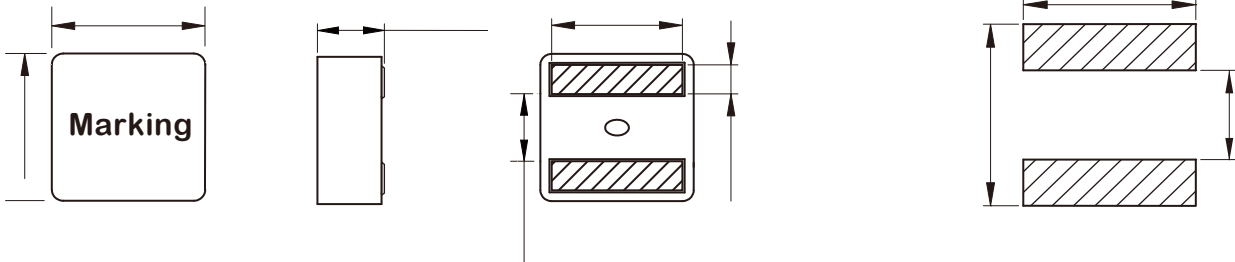
## FEATURES

- 
- 
- 
- 
- 
- 
- 

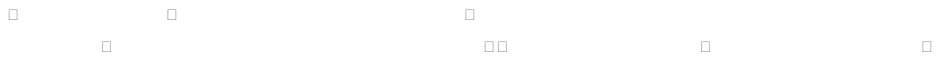
°C

## APPLICATION

- 
- 



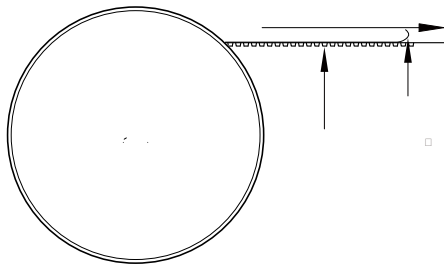
Part No	L@100KHz /0.1V	Tolerance	I <sub>SAT</sub> Typ.	I <sub>R</sub>		R <sub>DC</sub> Max.
				20°C rise	40°C rise	







□ □ :



\_\_\_\_\_

□ □